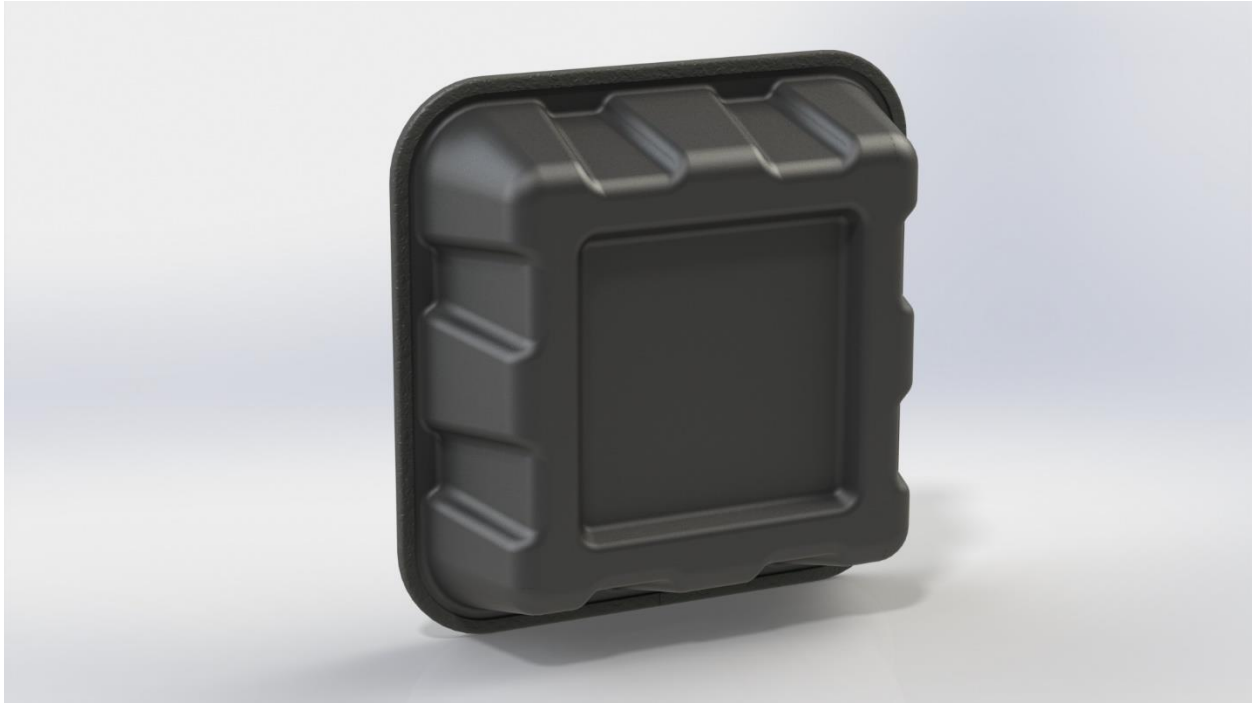


## CP-1V VHF ANTENNA



The CP-1V VHF antenna is a leap forward in RF technology. It occupies a small footprint of 18 inches square, but performs more effectively than much larger competitors. It is a true circularly polarized antenna, and covers a bandwidth of 174-216 MHz; the entire VHF wireless intercom band.

In performance tests, the CP-1V antenna exhibited fewer dropouts and greater overall range. It's rugged construction makes it suitable for both indoor and outdoor use, and it handles enough power to make it practical for multi-transmitter VHF in-ear monitor systems.

### SPECIFICATIONS

- SWR: Nominally 2:1 or better over the entire band, 174-216 MHz.
- Power handling: 5 watts.
- Gain: 3 dBd, circular.
- Cardioid pattern, -3 dB beamwidth: Approximately 100 degrees.
- Front to back ratio: Approximately 20 dB.